

SOUTH DOWNS
NATIONAL PARK

SOUTH DOWNS
NATIONAL PARK

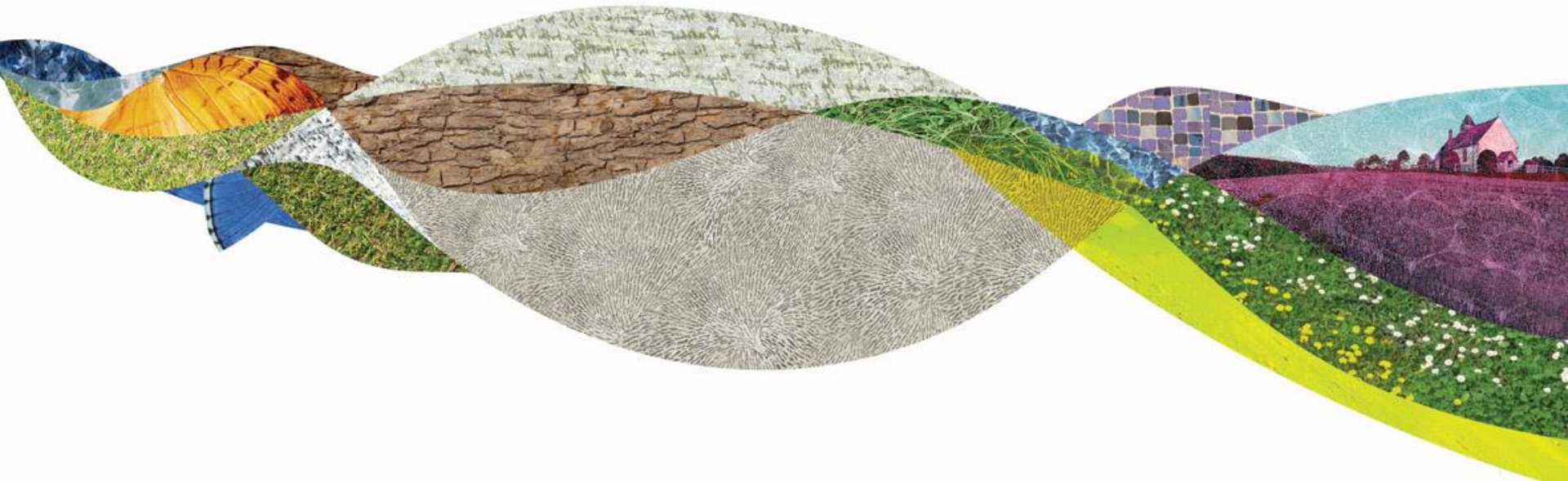
Funtington Parish Council

Neighbourhood Planning An introduction

A parish split by the National Park designation

Hannah Collier

Senior Planning Policy Officer



Content

- Part one: Funtington in the National Park
- Part two: What is a Neighbourhood Development Plan (NDP)
- Part three: What can be included in a NDP / NDP Scope
- Part four: The people behind the plan (human resource)
- Part five: The Neighbourhood Plan process
- Part six: Key points of contact
- Part seven: Q&A



5 key points

- Neighbourhood Development Plans (NDP) are voluntary.
- They require time and effort from volunteers from the community and the Parish Council.
- Their purpose is to create locally specific planning policies, that gives local people the power to shape their community.
- Grants available to help – up to 10k depending on the complexity of the plan.
- On average they take 18 months – 2 years to produce.



1. Funtington in the National Park



SOUTH DOWNS NATIONAL PARK

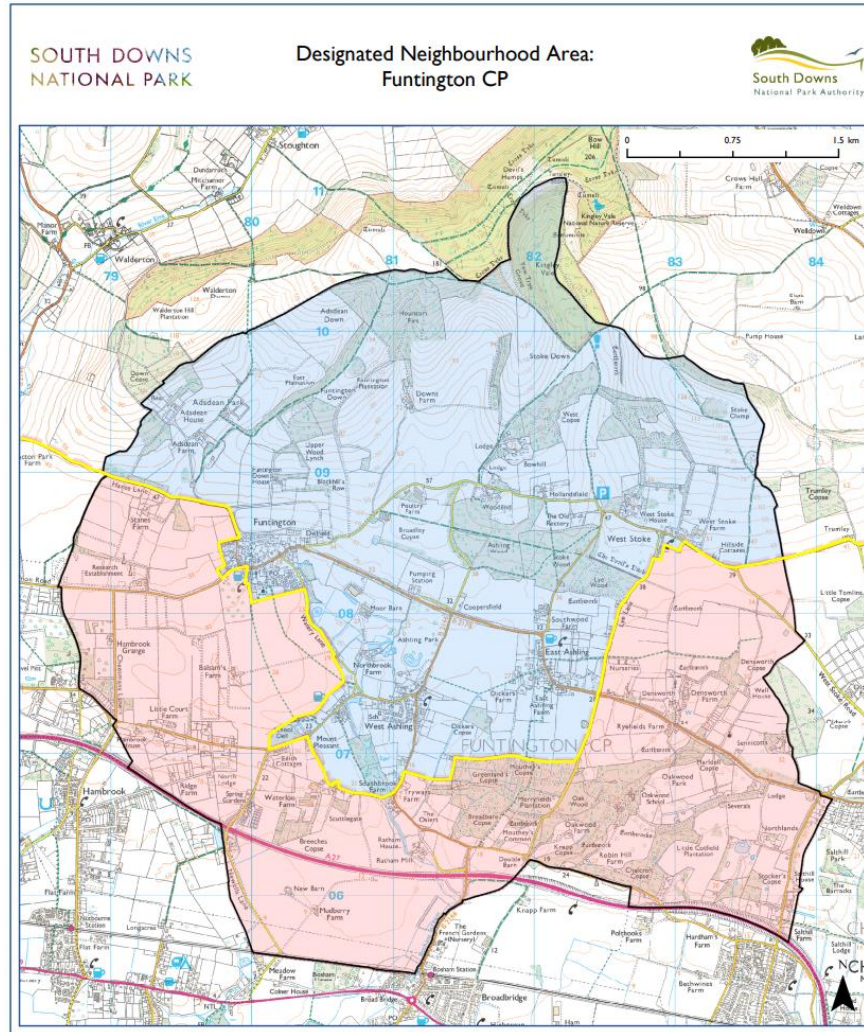
It's a big place



Variety across the National Park



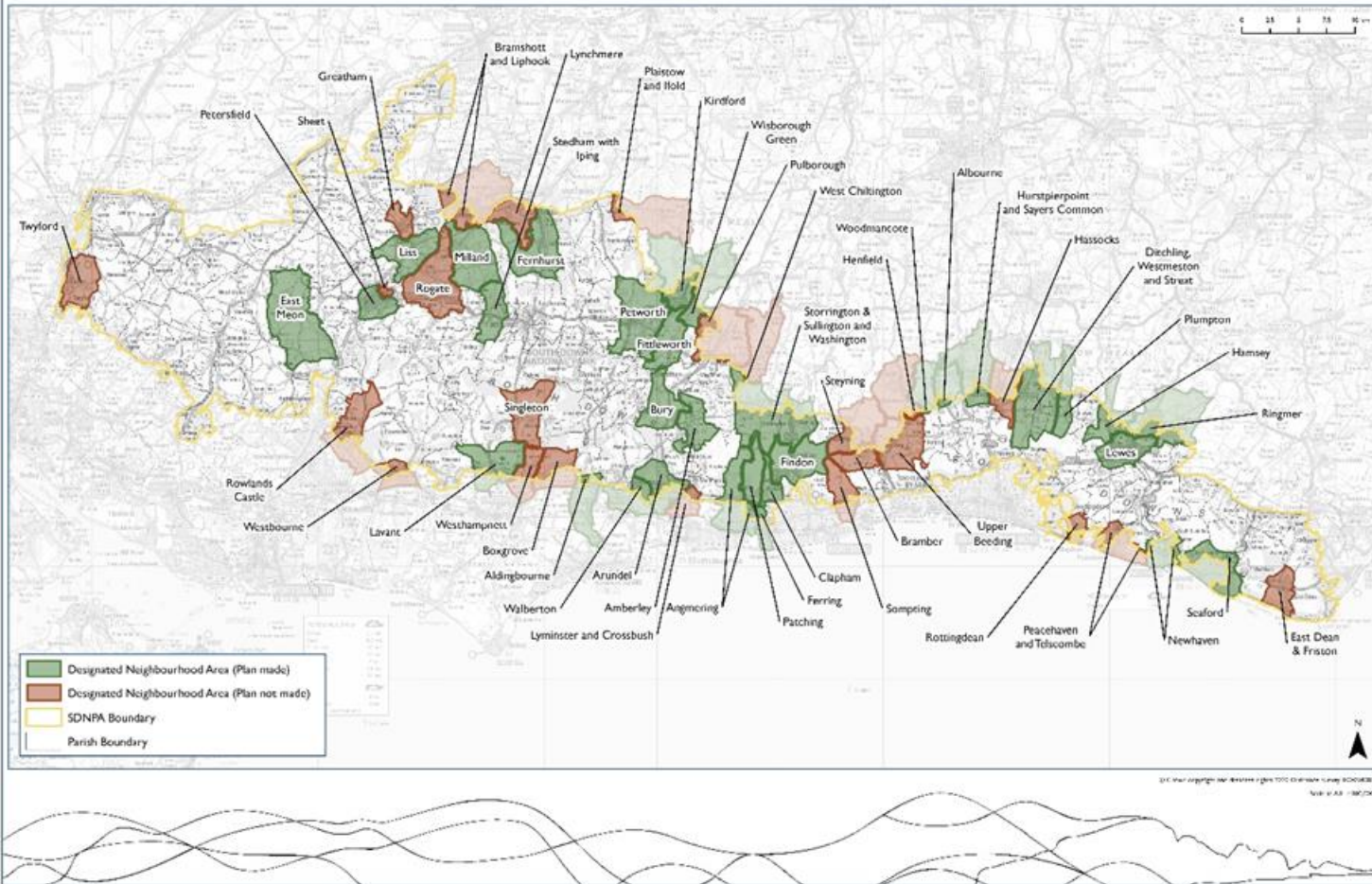
Split by the designation....



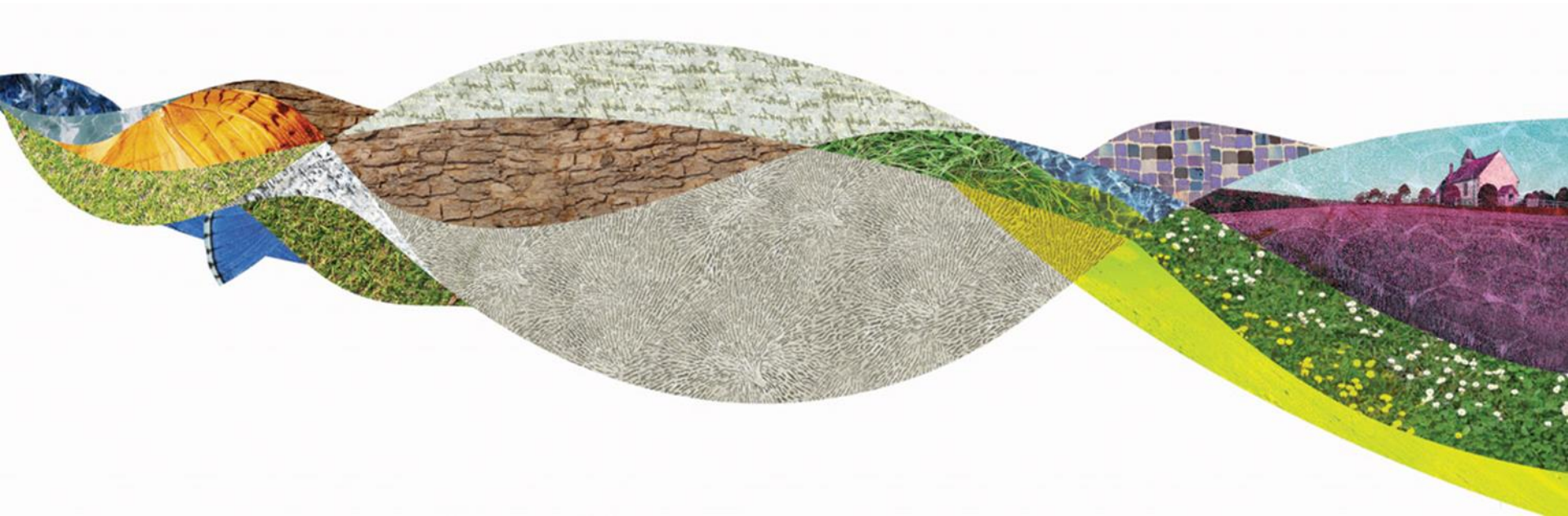
Funtington is not alone

SOUTH DOWNS
NATIONAL PARK

Designated Neighbourhood Areas and Made Neighbourhood Development Plans



2. What is a Neighbourhood Development Plan (NDP)



The Localism Act 2011

“For too long, central government has hoarded and concentrated power. Trying to improve people’s lives by imposing decisions, setting targets and demanding inspections from Whitehall simply doesn’t work.

It creates bureaucracy. It leaves no room for adaptation to reflect local circumstances or innovation to deliver services more effectively and at lower cost.

And it leaves people feeling ‘done to’ and imposed upon - the very opposite of the sense of participation and involvement on which a healthy democracy thrives.”



Localism Act 2011

CHAPTER 20



Localism

- Government launch Localism Act 2011
- New rights and powers for communities
- Community Right to Challenge (express interest in running a public service) (parishes, community groups, employees)
- Community Right to Build (proposals for development, without further planning permission) (examination, referendum)
- Neighbourhood Planning
- 2400 communities have undertaken a plan.



Localism Act 2011

CHAPTER 20



Neighbourhood Planning

- Scope – stage you are at now – SWOT analysis
- Aim / Vision
- Objectives
- Parish overview and history
- Policy context – adopted development plan
- Planning Policies
- Policies map – shows designations and allocations
- Implementation and Monitoring
- Appendices; evidence base, other maps



Localism Act 2011

CHAPTER 20



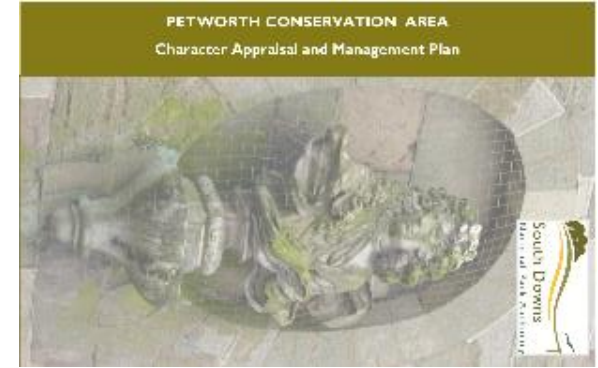
Other forms of Localism in action



Village Design Statements



Neighbourhood Development Plans

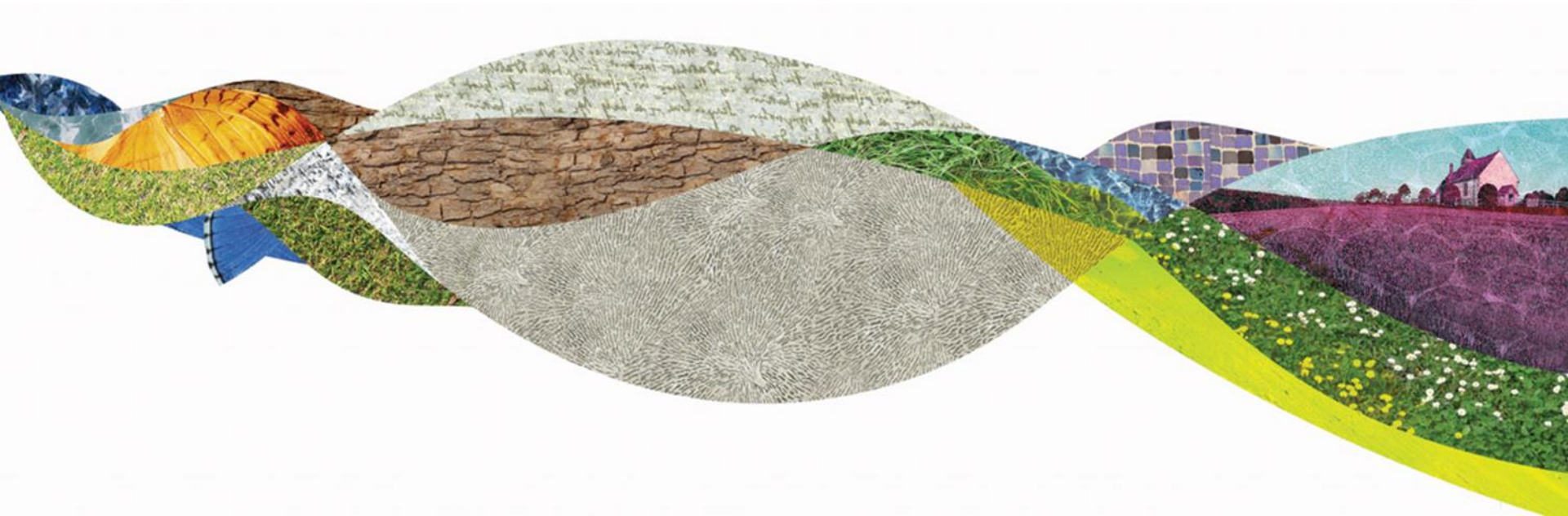


Conservation Area Appraisals and Management Plan

<https://www.southdowns.gov.uk/planning-policy/neighbourhood-planning/neighbourhood-development-plans/>



3. Neighbourhood Plan scope



A complex planning situation...

- 176 parishes
- 1600 square kilometres
- Its difficult to write policy which is relevant in Winchester and Eastbourne
- Relevant in Caker Lane and Seven Sisters
- We encourage local communities to prepare locally specific plans to supplement our own planning policies
- This is where Neighbourhood Planning comes in!



A complex planning situation...

- Planning policy documents must conform to their parent policy document

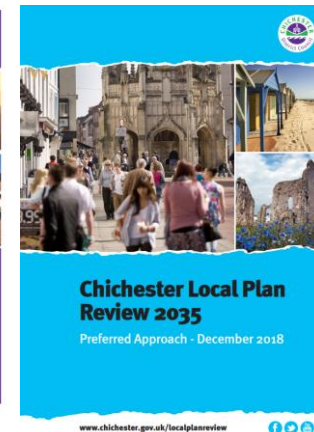
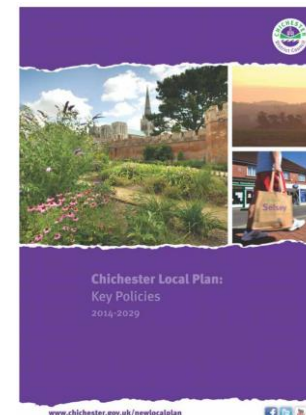
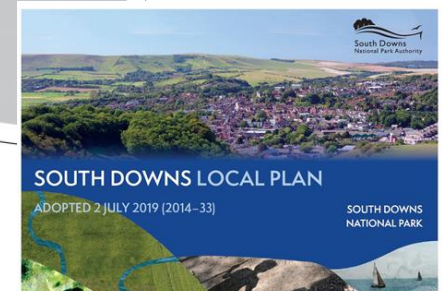
NPPF (broad / national)

^

Chichester Local Plan / SDLP (District / Sub regional)

^

Funtington Neighbourhood Plan?? (local)



Planning policies (I)

- Housing allocations – older persons, affordable housing, starter homes, rural exception sites. The SDNP Local Plan proposes no housing number for Funtington (the part of Funtington in the National Park).
- Design/Standards of new Development.
- Local Green Spaces – protecting the special green areas in the parish.
- Safeguarding views – landmark views in and out of the parish. Views from PRoW, accessible areas.
- Tranquillity and Dark Night Skies.
- Economy, Employment, Tourism.
- Environment, Green Infrastructure, Biodiversity.
- Infrastructure, Access and Movement.

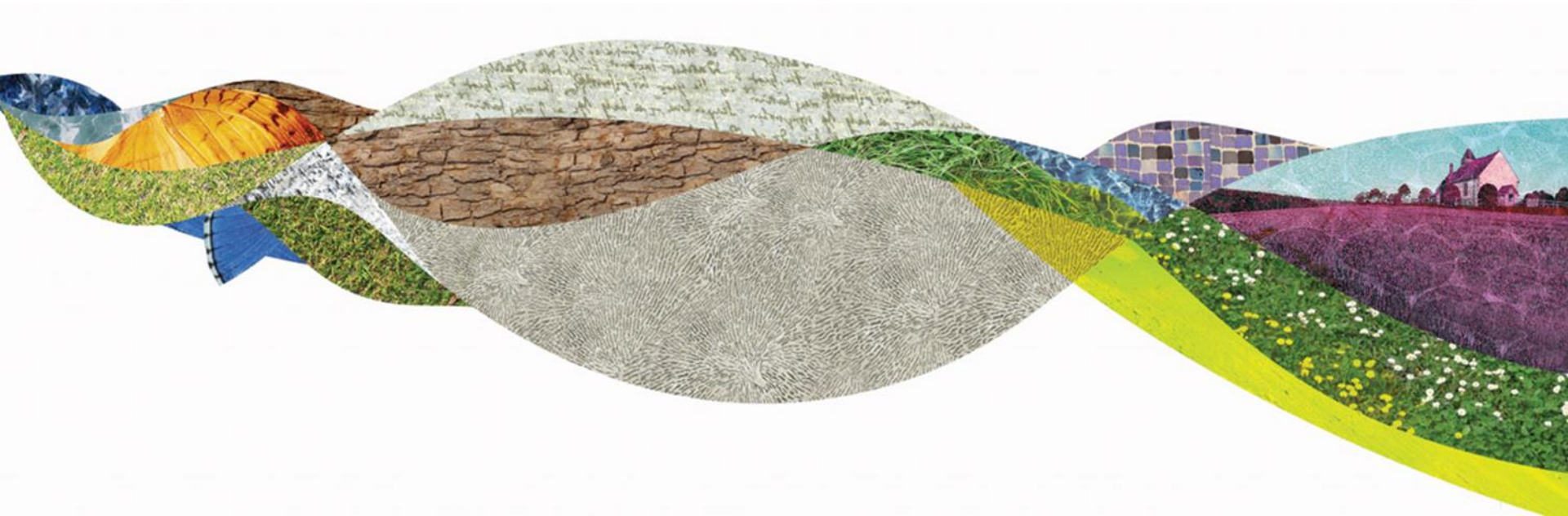


Planning policies (2)

- Picking the important and unique aspects that make the parish of Funtington special – and bringing them into policy.
- All policies must be land use.
- All policies must be supported by evidence. In some cases we may already have this, in the evidence base that supported the Local Plan.
- All policies that you draft must be in ‘general conformity’ with the adopted Development Plan Strategic Policies – SDLP and the CLP Key Policies.



4. The people behind the plan



The people behind the plan



The different terms

- **Parish Council / PC** – the one in charge of the process, should be always kept informed.
- **Qualifying Body** – refers to the Parish/Town Council. Only the Qualifying Body can take the formal decisions. E.g. when to consult, when to submit to the Planning Authority. All statutory decisions must come from the Qualifying body.
- **Steering Group** – The core group of individuals that are working on producing the plan. Produce terms of reference and put on website (map). Lead the process and inform the working parties.
- **Working parties** – Different groups that work on different areas of the plan e.g. housing, environment, heritage, community etc.
- **Consultant** – Most groups decide that they require extra assistance. As sometimes the skills required may not be found in the parish. Plenty of support and consultants available online – or ask via word of mouth.



Funding and support

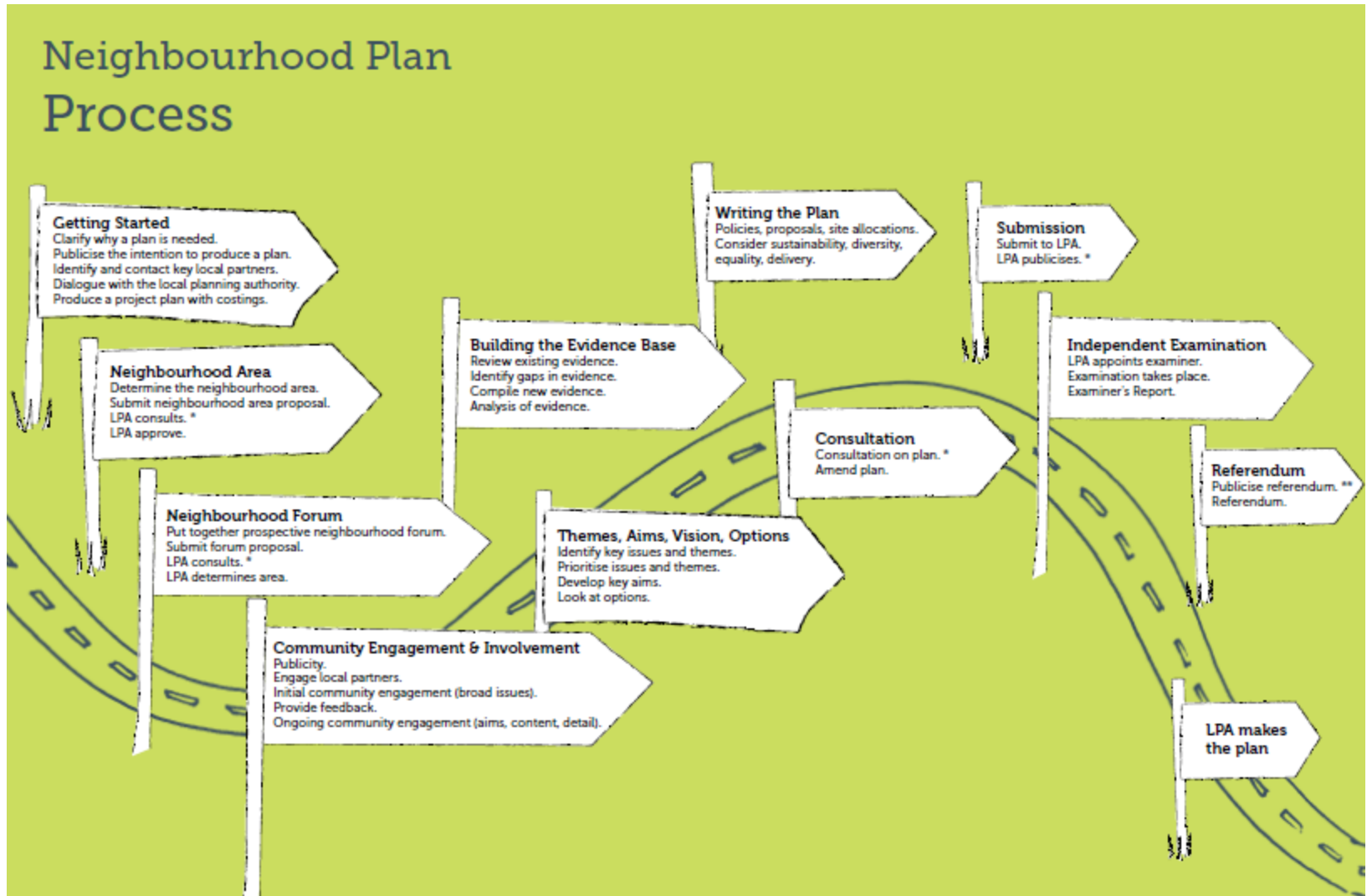
- **Locality** – 3 different types of grant funding available. Basic grant funding is up to £10k (as well as extra for technical support). The funding level depends on the complexity of the plan.
- **Aecom** – can offer technical assistance to Neighbourhood Planning groups (via Locality).
- **Mapping** – The SDNPA can assist with some enquiries, and can produce a suite of maps.
- **General support** – Ourselves and CDC are here to support you through this process. We understand that planning is difficult, so officers are on hand to help with any general processes, health checks.



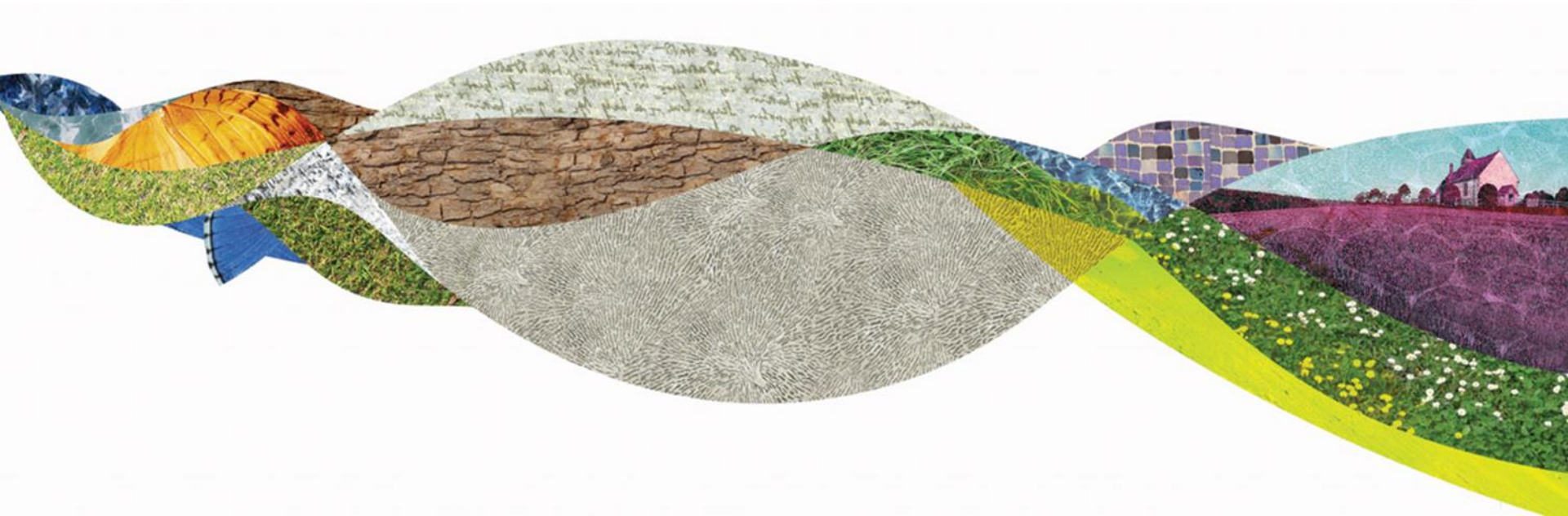
5. The Neighbourhood Planning process



The Neighbourhood Planning process



6. Key points of contact



Key points of contact....



Planning Policy – Neighbourhood Plans (SDNPA)

Hannah.collier@southdowns.gov.uk

Neighbourhoodplanning@southdowns.gov.uk

Nat Belderson– Planning Link Officer – works between CDC and SDNPA on planning applications

Nat.Belderson@southdowns.gov.uk

Locality – Neighbourhood Plan Support

<https://neighbourhoodplanning.org/>

Planning Portal

https://www.planningportal.co.uk/info/200130/common_projects/42/neighbourhood_planning



Contact...



www.southdowns.gov.uk



Hannah.collier@southdowns.gov.uk



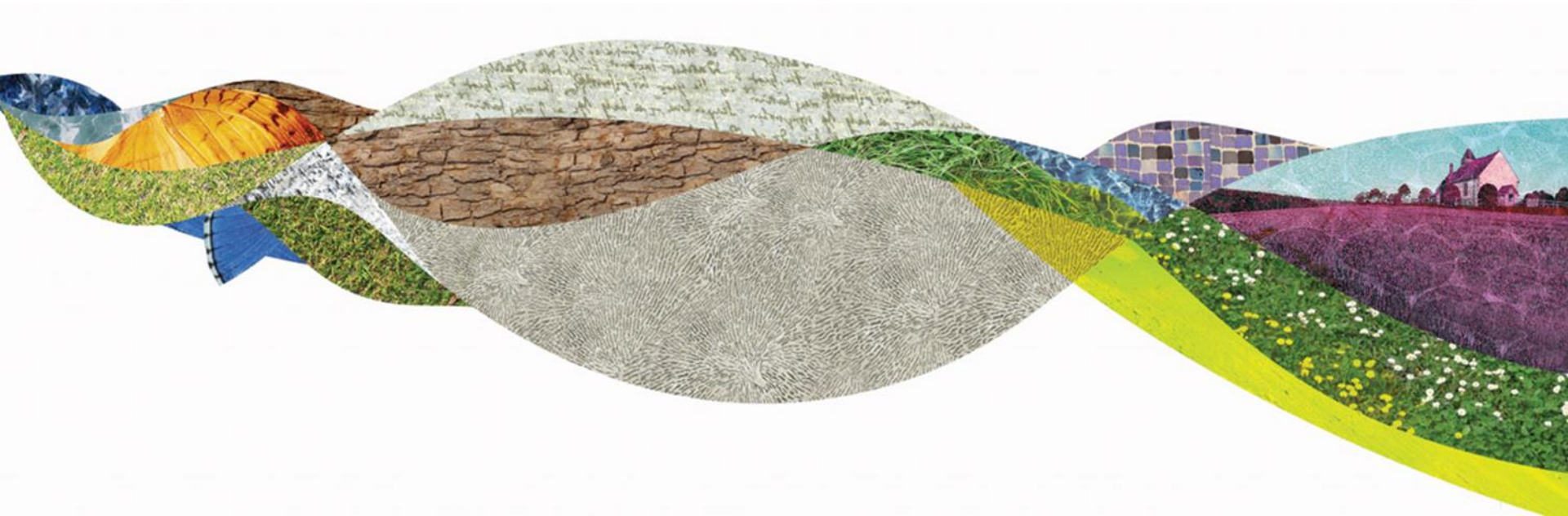
01730 819345 / 07471 997343



South Downs Centre, North Street, Midhurst, West
Sussex, GU29 9DH



7. Questions and answers



Questions.....

